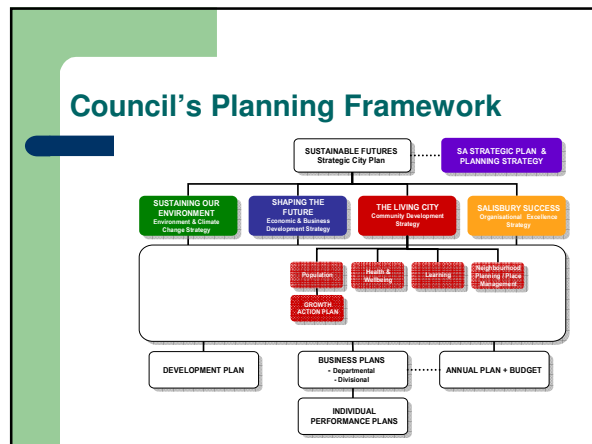


SUSTAINABLE FUTURES: Salisbury's Living City Strategy

Children Communities Connections
Presentation November 2008



Why have a Living City Strategy?

- Forms framework to deliver on Living City/Community element of 'Sustainable Futures: Salisbury's City Plan'
- Economy+ Environment+ Community = Sustainability & Prosperity
- Promotes Salisbury as destination of choice for families, industry, Research & Development
- Pro-active, long-term, strategic direction

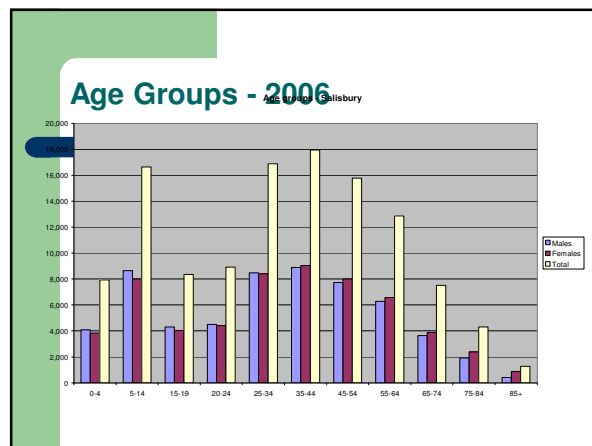
Integration – 'Triple bottom line'

- Ensures that:
 - > Social policy & actions support economic & sustainable urban development
 - > Community capacity & self-reliance ↑ = reliance on service delivery & support from Council and others ↓
 - > Wealth creation & business sustainability maintained

'Pulls' of strong social fabric – for residents & business/industry

- Healthy, well-educated, skilled population
- Strong community resilience & self-reliance
- Low crime rates
- High perceptions of safety
- High degrees social interaction, incl culture, sport, recreation
- Local opportunities – community, education, learning, employment
- Social infrastructure – services (eg educ'n, learning, health)

All together = strong social fabric = prosperity



Migration Streams 2007

	South Australia	Salisbury	Playford	Pt Adelaide Enfield	Tea Tree Gully
Humanitarian	1375	251	85	354	39
Family	2118	225	56	233	95
Skilled	3916	169	33	355	234
Unknown	418	12	-	31	5
TOTAL	7827	657	174	973	373

Key drivers for Social Development

- State '2 million by 2050' target
- NEXY
- Affordable housing
- Relocation Defence Battalion
- DIAC settlement policies
- Local economic growth – outstripping Gross State Product (issues for learning & skills mis-match)

Economic Trends

Over past 5 yrs:

- Salisbury
 - 6.2% GRP growth
 - 4.2% employment growth
- State
 - 2.7% GSP growth
 - 1.95% employment growth

(Source: Blandy 2008)

Skills mis-match

- Locals captured only 3293 of the 12,834 jobs created in Salisbury over the 15 years 1991-2006.
- While 11.1 % of jobs in Salisbury are held by local people with degrees, 32.1 % of the jobs created in Salisbury over the past 15 years were filled by people with degrees.
- Two thirds of jobs in Salisbury held by non-locals

Key issues relating to skills mis-match & education outcomes

- **School retention:**
 - > Completed Yr 12 – Salisbury 36.2% of State 42.3%
- Post school qualifications:
 - > Salisbury 29.8% of State 62.1%
- **Unemployment:**
 - > 'Official' – June 08 Salis 7.7% of Adel 4.2%

To meet the challenges and opportunities: Structure of LC Strategy

- Four Key Planning Streams:
 1. Population (how residents will live, not just how many)
 2. Health & Wellbeing (physical, emotional, social, financial)
 3. Learning (for employment, not directly for employment & community-based)
 4. Neighbourhood Planning/Place Management (access to services, crime reduction, safety)

Key Action Plans From Four Planning Streams

- Population & Residential
- Affordable Housing
- Families & Children
- Youth
- Aged
- Multicultural (incl New Arrivals/Settlement)
- Learning
- Aboriginal Development (incl Native Title)
- Community safety

Policies & Actions cont.....

- Social interaction/Community engagement
- Service planning
- Alcohol & Other Drugs
- Gambling/Gaming Machines
- Recreation, Leisure & Sports Development
- Culture

Key initiatives to support families

- Employment programs – school leavers & older workers
- Affordable Housing
- Crime reduction & community safety
- School retention programs
- Further education support programs
- Learning programs

Key initiatives cont.....

Direct family support

- Communities for Children – Playground & engagement project
- Alcohol and other drug minimisation
- Health & wellbeing
- Migrant settlement programs

Summary

- City of Salisbury links social development with economic development & environment
- Aim to provide a strong social fabric to strengthen capacity of community
- Families – cornerstone to continued, sustainable development
- Aim to support families in a range of ways to facilitate best outcomes for all members